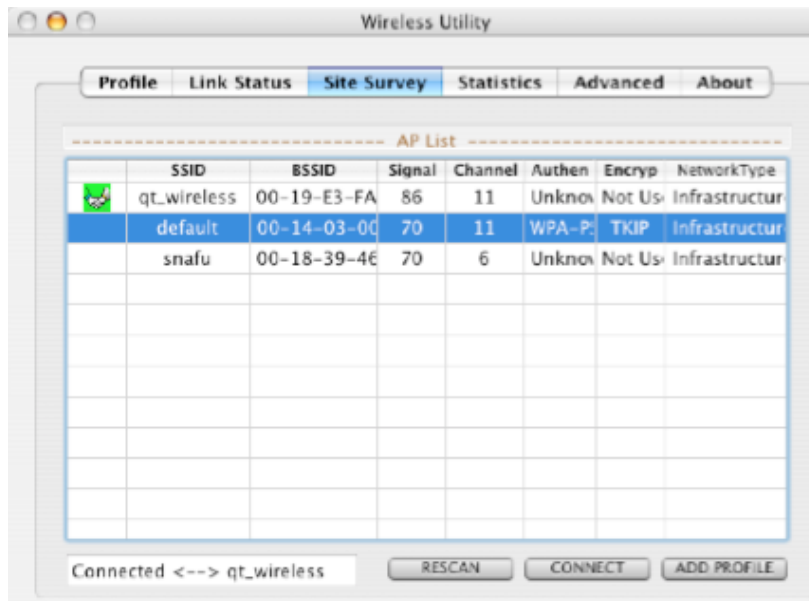
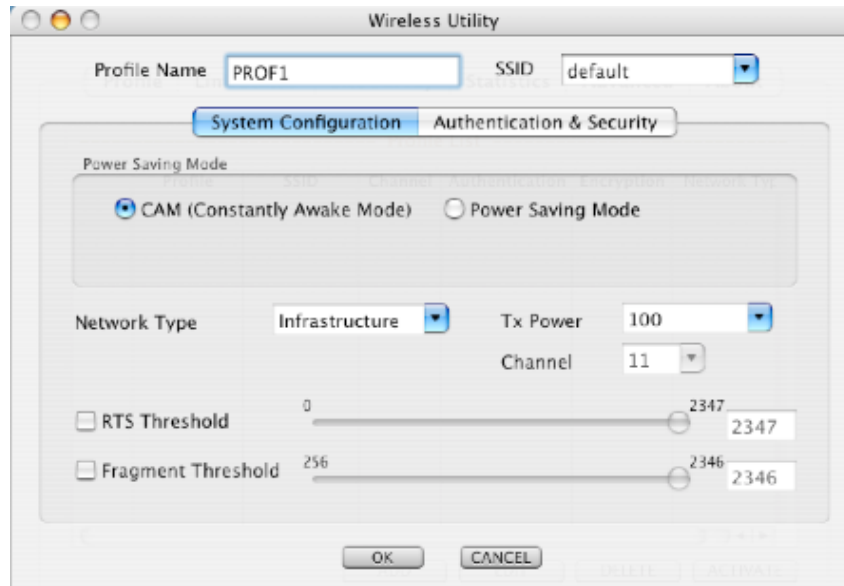


Add Profile for an encrypted access point

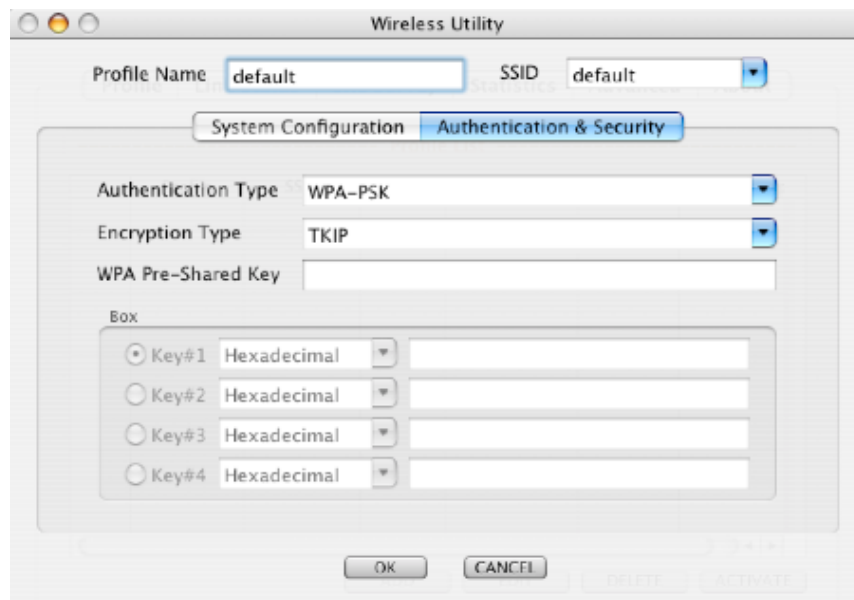
Open the Wireless USB Utility. Select the access point for which you wish to add a profile. For example: in the image below you would select the access point "default" by clicking once anywhere in that row.



Next, select the "Add Profile" button located in the bottom right corner of the Wireless USB Utility window. From this screen you can change the name of this profile to whatever name which makes it easy to correlate this profile with the access point. For example, this profile will be called "default".



Next, click on the button labeled "Authentication and Security". It will take you to the next page in the form data that you will complete for the "default" profile. Notice that the software has identified the Authentication Type and Encryption used on your encrypted access point. In this example, the access point default has been identified as using WPA-PSK as the authentication type and TKIP as the encryption type.



Now type in the WPA Pre-Shared Key in the corresponding field and click ok. Double check that you have entered the pre-shared key correctly. The pre-shared key is case sensitive so pay attention to this detail. Click Ok.

Now select "Activate" at the bottom right corner of the Wireless USB Utility window. Now when you plug in your Quicky, this profile will automatically connect you to the "default" access point and you will not be required to re-enter your password.

