

QUICKERTEK

Wireless Performance Products *for Mac*

QuickerTek's QUICKY-FP™ USB Wireless Transceiver for Flat Panel Displays

Instruction Manual

visit our website:

www.QuickerTek.com

Email questions to:

[Support@ QuickerTek.com](mailto:Support@QuickerTek.com)

KIT CONTENTS

CD-Installation software
Instruction Manual
5dbi Antenna
USB Cable
AC Power Supply
Coolness is included!



1. Power up the Mac.

2. In the upper right corner of display locate your **AirPort icon**,



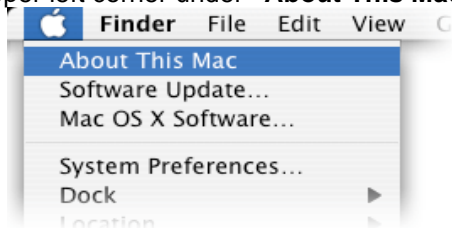
3. Click to display the drop down menu select “**Turn AirPort Off**”



4. This is done so that you can easily tell if the Quicky-FP is working.

5. Insert the QuickerTek CD, locate the folder labeled **No Sleep Installer**, and double click to open.

6. Locate the folder that matches the operating system of your machine OS X 10.3 or 10.4 Note: If you are unsure which version click on the Apple in the upper left corner under “**About This Mac**”



6. Choose the correct driver and follow the instructions as prompted.

7. After installation is complete a message will appear asking you to restart your computer **RESTART**

8. When computer is back up, make sure that the AirPort is still off.

9. Plug the QuickerTek “Quicky-FP” into the USB port & plug AC power unit into outlet (Note: a pop up message stating a “**New Port Device**” was detected and the name will appear as “**Ethernet Adapter**,” please verify that it is configured correctly in the next step.) Click “**OK**” See photo next page.

Accessing a WEP encrypted Apple AirPort Base Station via QuickerTek Quicky-FP

Background information

Apple AirPort and AirPort extreme base stations support 40-bit or 128-bit encryption. The only exception to this is the graphite base station, which only supports 40-bit encryption. The encryption uses either ASCII (a-z 0-9) or hexadecimal (0-9 a-f). 40-bit encryption uses 5 ASCII or 10 hexadecimal characters. 128-bit uses 13 ASCII or 26 hexadecimal characters.

Apple base stations and clients using AirPort software are user friendly (what else would you expect) when it comes to encryption passwords. You can enter less than the Prerequisite number of characters for 40-bit or 128-bit encryption and the base station will create the rest of the necessary characters for the desired encryption, transparently to the user. This is great except when the client is not using AirPort software, like the QuickerTek Quicky-FP.

In the case of the Quicky-FP, you will need to get the full password the base station creates,

which is known as the Network Equivalent Password.

To acquire the Network Equivalent Password, you will need to access the base station from

a client using the AirPort software via the AirPort Administration utility. Once you have logged into the AirPort base station go to the Base Station menu and select Network Equivalent Password.

You will be presented a dialog box that has the password in hexadecimal. Record this password as you will need it in the following step.

Bring up the USB Wireless Utility, and select the encrypted base station that you are attempting to access, and then select Connect.

You will be presented with a dialog box. You must select the appropriate encryption type as noted from the AirPort Administration utility. Select hexadecimal from the Key #1 popup menu. Then type in the 10 or 26 character password you noted from the Network Equivalent Password from the AirPort Administration utility and then hit Ok.

You will then be attached to the base station.

Accessing a WPA encrypted Apple AirPort Base Station via QuickerTek Quicky-FP

To access a WPA encrypted Apple AirPort Base Station via QuickerTek Quicky -FP simply open the USB Wireless Utility and select the base station you wish to attach to and select Connect.

In the dialog box that appears, select WPA-PSK and then enter the appropriate password in the WPA Pre-Shared Key field and click Ok.

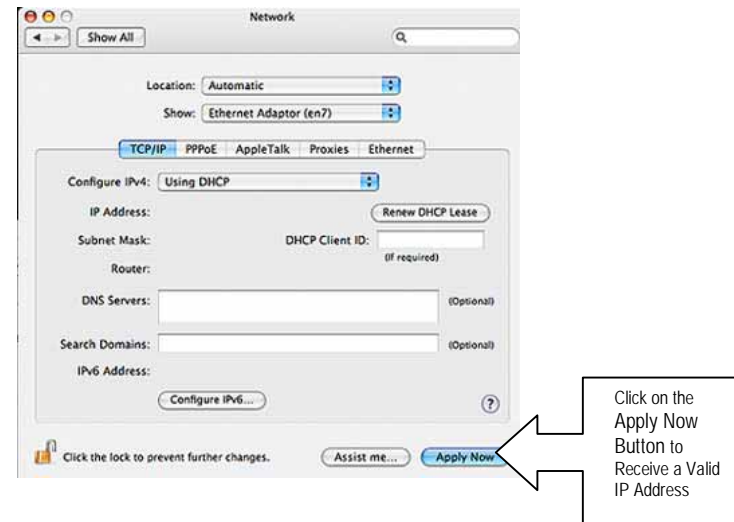
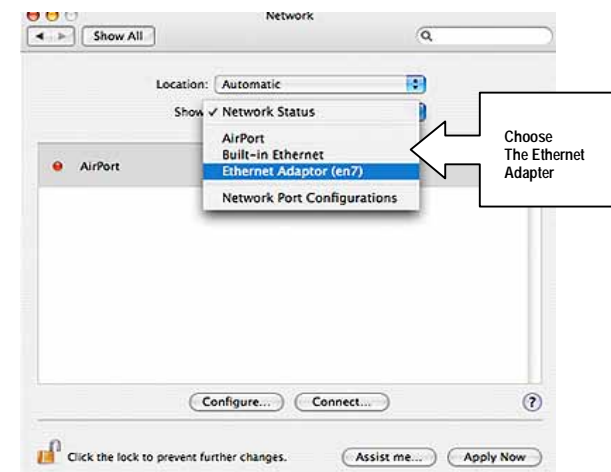
If you are using WPA enterprise, enter the appropriate Radius Server information and Pre-Shared Key information as provided by your network administrator and then click Ok.

Frequently Asked Questions

- **What is the difference between a Quicky-FP and the Connect?**
The Connect is a Universal Repeater which means it sets up a wireless network of its own, thus if you run iStumbler it will see two networks; The one between your AirPort card and the Connect, and another network between the Connect and the client computer. The Connect does not have to be connected to your computer in any way, that way it is repeating the IP from the targeted network.
- **Will the Quicky-FP work with other AirPort cards other than Apple Base Stations?**
Yes, the Quicky-FP works with all AirPort cards such as Linksys Belkin, D-Link, etc.
- **Do I have to use the wall charger (A/C adaptor)?**
No, the Quicky-FP can be directly powered from the USB port. Many USB products work in this fashion.
- **Do I have to turn off the AirPort card?**
No, but there is no need to run both at once. Consider battery life.
- **I sometimes have a weak signal from my Base Station. Will the Quicky-FP fix that?**
Yes, that is what the Quicky-FP does best. The Quicky-FP will also increase your bandwidth from a weak AirPort signal since the transfer speed is directly related to the signal strength.
- **How come I can't use iStumbler to see what the Quicky-FP is doing?**
Because iStumbler (and MacStumbler) only look at the AirPort card signal itself. We include the USB wireless utility in the software with the Quicky-FP for this reason.
- **Do I have to go to the System Preferences screen every time I want to use the Quicky-FP?**
No, simply use the "Apply Now" option when initially setting up the Quicky-FP. The Quicky icon will then show up every time the Quicky-FP is plugged in.
- **The Quicky-FP gets warm sometimes, is this okay?**
Yes, this is normal operation. It's ultra-compact design is designed with the thought that it will be in the open.
- **Why do I have to unplug the Quicky when not in use?**
No, The software is designed with a no sleep version, which keeps the device active at all times. This is for the iMac version.
- **The encryption code password is not coming from my keychain correctly. How do I enter the password?**
When Apple has you enter a password in to the keychain they use antilogarithms that generate the true 128-bit encryption password. You will need to use the "real password" to decrypt the network.
- **Can I add a different antenna to my Quicky-FP?**
The Antenna connector is a RP-SMA, thus any coax or antenna can be added to re-shape the receive & XMT pattern.
- **Can I extend the USB Cable?**
Yes, this is so the Quicky -FP can be placed in different locations for best signal strength.

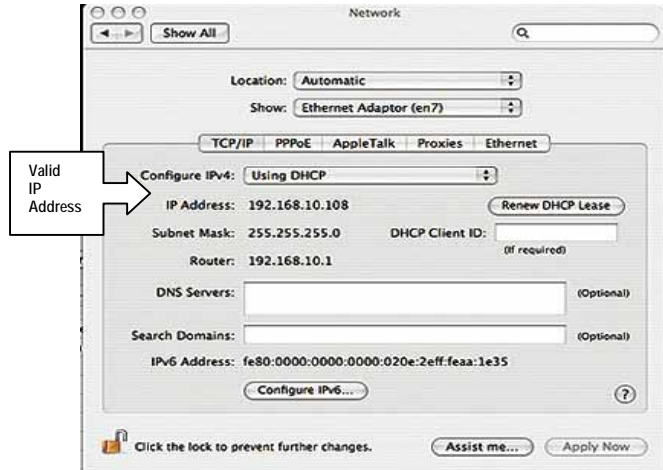


10. Open **Systems Preferences** choose "**Network**" in the "**Show**" drop down menu choose the "**Ethernet Adaptor**" **APPLY NOW** see photos below.



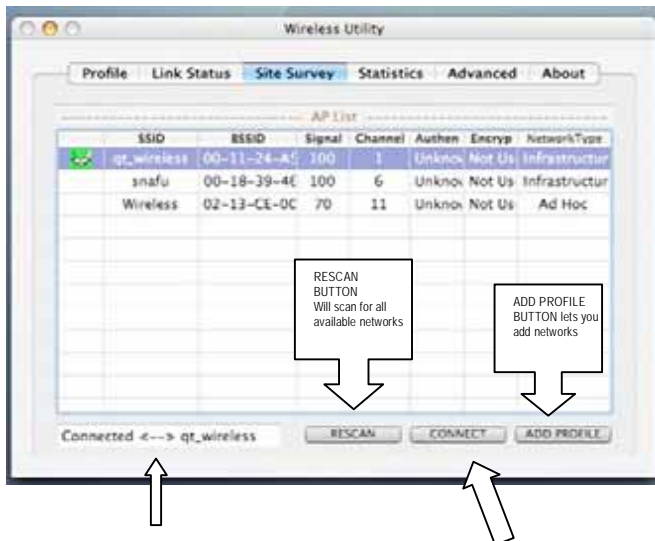
Please Note: It will take a few seconds to secure a valid IP Address

- It will take a few seconds for a valid IP Address. See screen shot below. Close out of System Preferences.



- Open the USB Wireless Utility, click "Site Survey", it will show all available networks in your area.

SITE SURVEY

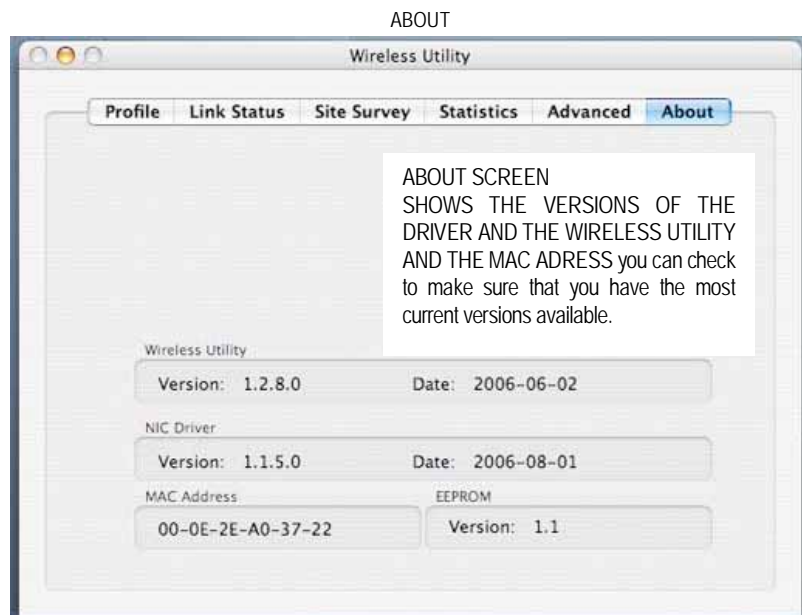
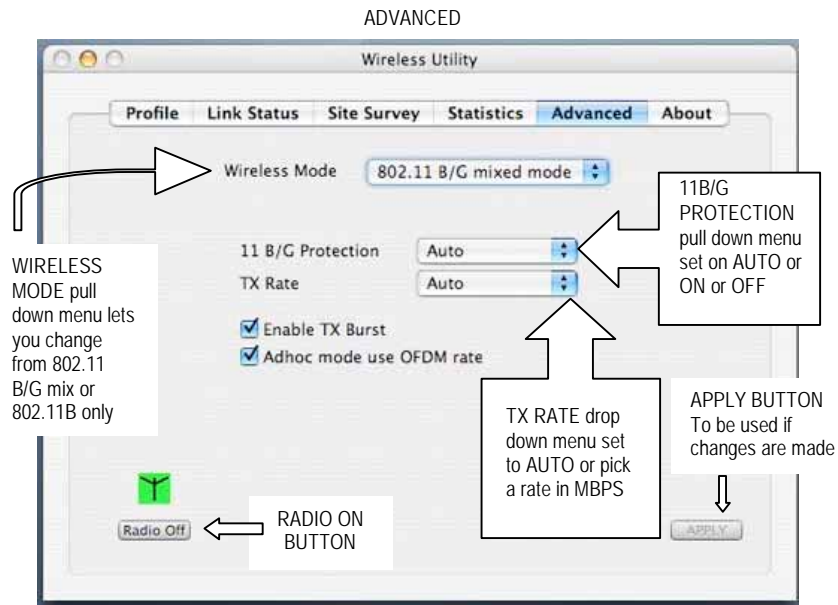


- Click the network you plan on connecting to. Click "**Connect.**" In the lower left corner it will indicate if you are connected or not.
- You should be able to connect to the Internet.
- Congratulations! Installation is complete! Now eject the CD, was that a Quicky-FP or what?

Useful Information

- The Quicky-FP is compatible with all Mac's with a USB port with operating systems OS X 10.3 –10.4. You don't have to use the same USB port every time.
- USB ports have current limited so if you are using other USB powered devices on the computer, you may want to use the wall wart or discontinue the other USB devices.
- The Quicky-FP will connect to any open 802.11b/g Access Point, such as Linksys, Belkin, & D-link, etc. not just Apple AirPort Base Stations.
- The Quicky-FP can be powered from either the USB port or the wall power supply
- MacStumbler and iStumbler only works with the internal AirPort cards.
- Site Survey is used when the Quicky-FP is plugged into your computer, the signal level will not go over 100 where as MacStumbler and iStumbler go above 100, do not be alarmed as both are relative values.
- The Quicky-FP produces 500mW of RF output your AirPort card produces 30mW.
- The Quicky-FP Transceiver is 500mW of RF transmitter power and LNA on the receive side that amplifies the incoming WiFi Signal. Which means it increases the bandwidth.
- No need to unplug the Quicky-FP when computer is put in sleep mode or turned off. Install the "no sleep version" this keeps the device active at all times.
- The Quicky-FP will get warm when in use; do not be alarmed, it should be warm to the touch.
- When the Quicky-FP is to be stored please remove the antenna to protect the antenna connector.
- Please check our website for software updates/downloads and upgrades to the manual.

QuickerTek, Inc.
 7777 E. Osie, Suite 304a
 Wichita, KS 67207
 316 691 1585
 316 612 1119 fax
 Support@QuickerTek.com
 Quicky -FP 1.3v



This next section is for SECURITY

If your wireless network is secure please see your manuals for configuration instructions. Most wireless networks use either WEP or WPA.

(WEP)- WIRED EQUIVALENT PRIVACY: Security protocol for wireless networks that uses an encryption method to transmit data. NOTE: For wireless devices to communicate all of them must use the same WEP settings.

(WPA)-WiFi PROTECTED ACCESS: Wireless security with greater protection than WEP. NOTE: All computers, access points, and wireless adapters must use the same type of security either WEP or WPA.

Under the PROFILE SCREEN: at the bottom right corner you will find ADD, EDIT, DELETE & ATIVATE buttons. Click on ADD this screen appears.



Profile Name: Lets you name each profile differently.

SSID: stands for SERVICE SET IDENTIFIER, this also refers to the Network Name.

AUTHENTICATION & SECURITY drop down button: This is where you choose Open, Shared, and WPA

ENCRYPTION TYPE: None or WEP

WPA Pre-Shared Key: None or WEP

In the Box Below you would put your password

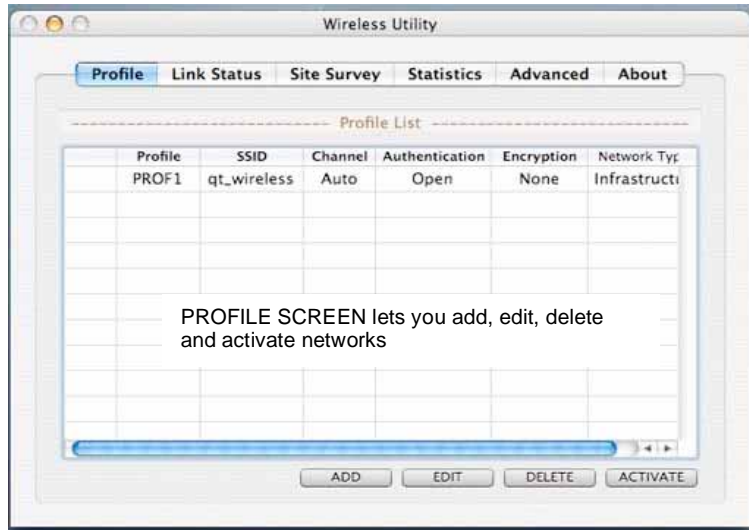
Instructions after installation

Just remember these 5 easy steps when you want to use the Quicky-FP.

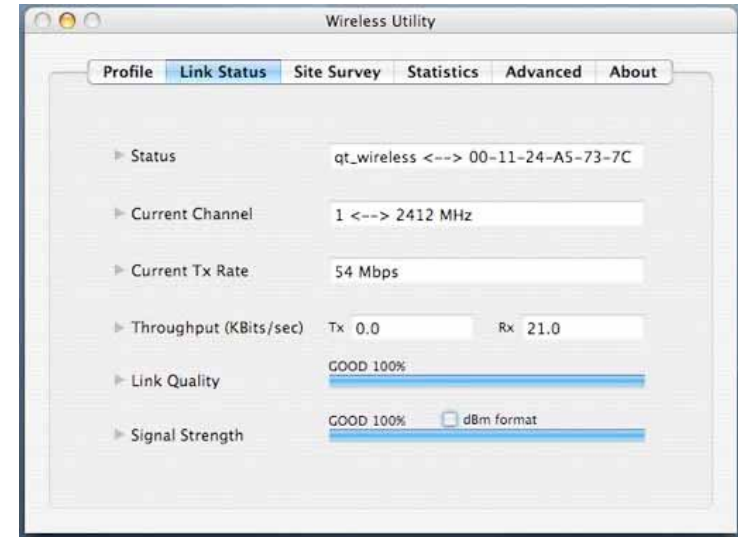
1. Turn off the AirPort to use the Quicky –FP and turn the AirPort on if you plan on using the internal AirPort.
2. Install Driver/Reboot
3. Plug the Quicky-FP into the USB port and power unit.
4. System Preferences: **Network** in the **Show**, drop down menu choose the **Ethernet Adapter**, click **“Apply Now.”** It takes 5-15 seconds for IP Address to appear.
5. Wireless Utility will pop up on the screen select **“Site Survey”** chooses which network you plan on connecting to. Highlight network & Click **“Connect”** Open Internet Browser.
6. That’s it.

This next section explains what each tab and button on the wireless utility does.

PROFILE

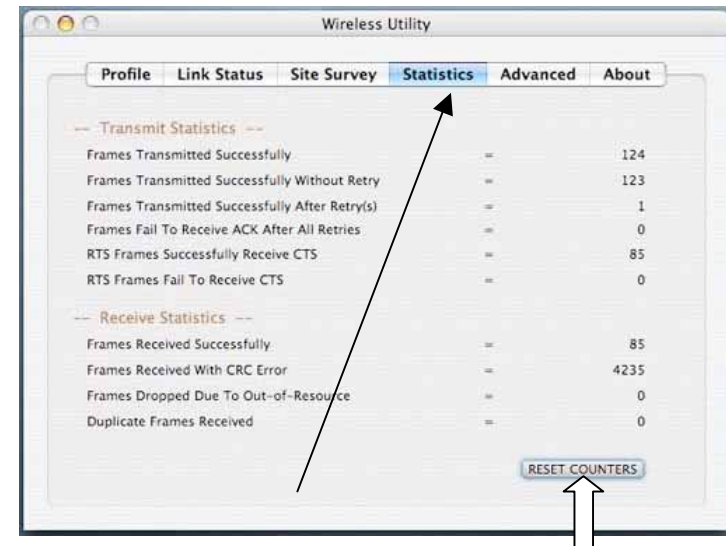


LINK STATUS



LINK STATUS SCREEN shows your network status, the channel your network is on, current transfer rate and receive rate, and it shows the link quality and the signal strength.

STATISTICS



The STATISTICS screen keeps count of transmit statistics & receive statistics with a RESET COUNTERS button at the bottom to clear and restart the count over.