



AirPort Extreme 802.11n Base Station Upgrade

Instruction Manual
NAEBS-Ant

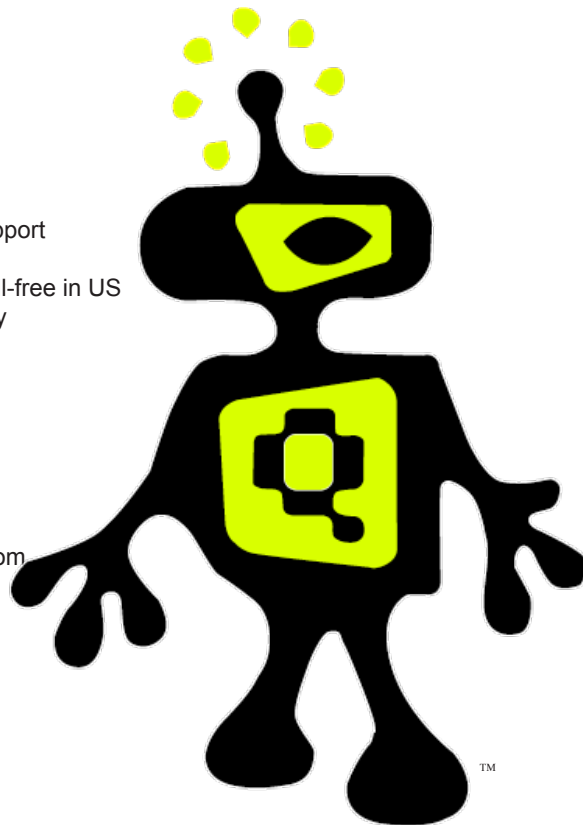


Questions?
Please contact us

316.691.1585 tech support
316.612.1119 fax
866.691.1585 sales toll-free in US
Monday through Friday
9am to 5 pm CST

visit our website:
www.QuickerTek.com

Email questions to:
support@quickertek.com



TM

KIT CONTENTS
Instruction Manual
Base Antenna w/ 4ft Cable
3 adapter cables

INSTRUCTIONS

1. Place the 802.11n Base Station face down on a non-abrasive, anti-static surface.
2. Peel off the rubber pad covering the bottom attached by an adhesive. See photo below.



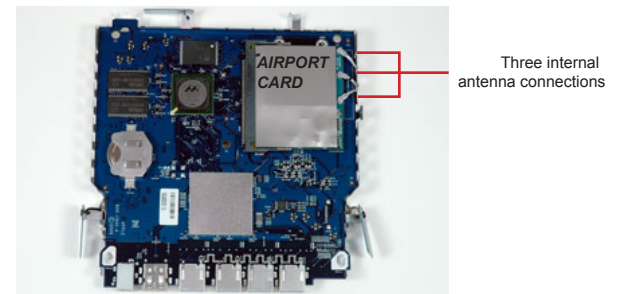
3. Using the #00 Philips screwdriver included in the kit, remove the five screws located at each corner and one in the middle.
4. lift the plastic cover to expose the guts of the base station. See photo below.



5. Lift the logic board out of the casing. See photo below.

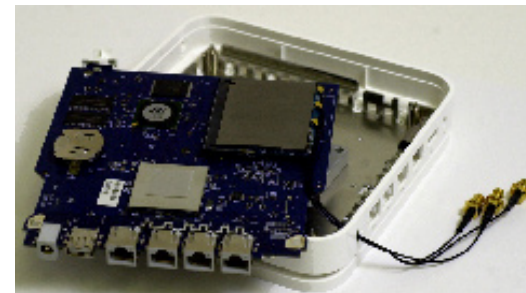


6. Turn unit over and you will see the Airport card with the three antenna connections. See photo below.



7. Disconnect the three connectors from the AirPort card and tuck the internal connectors to the sides of the unit. (note: you can use a piece of tape to secure the old connectors into place.)

8. Thread the three new adapter cables that came with your kit through the security slot at the back of the AirPort Base Station. See photo below.



9. Connect the three adapter cables to the AirPort card. An audible click indicates a good connection has been made.

10. Turn unit over and place it back into the case. Make sure that the metal cases snap into place.

11. You are now ready to place the place cover back on and replace the five screws.

12. Replace the rubber pad.

13. Turn the AirPort Extreme Base Station over and attach the base antenna to the adapter cables exiting from the security slot.

14. You are finished! Plug in the Base Station.



Frequently Asked Questions..

Will this upgrade work for any of the Apple Base Stations?

No, this upgrade is intended for the new 802.11n Apple Base Station only.