



Leopard Driver Instructions

Customers with QuickerTek Products upgrading to Leopard

If you currently have one of our products and have upgraded to Leopard please download the update driver from our website and follow the directions below.

1. If you currently have one of the following QuickerTek Products (Quicky, iQuicky, Quicky-FP, Quicky Jr., Nano-USB). **Uninstall the software you are currently using.**
2. Download the Leopard Folder from our website choose the correct download for your product.

Note: place the folder on your desktop for easy access.

3. Applications-locate the Utility Folder-inside locate Disk Utility Double click to open and click on your hard drive located on the left side of the screen. Click Repair Disk Permissions.

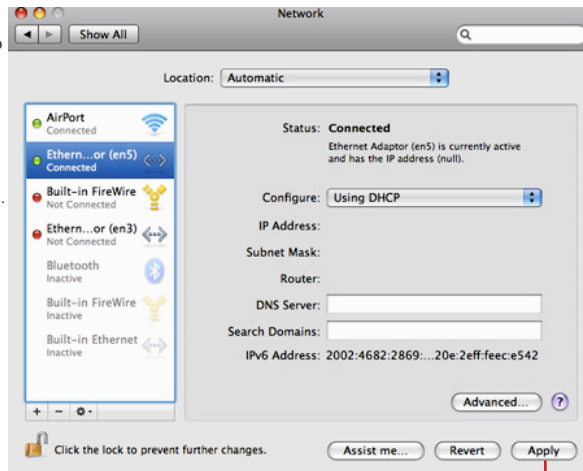
This may take a few minutes depending on how many folders & files you have on your hard drive. When finished it will tell you that permissions were repaired. Close Disk Utility.



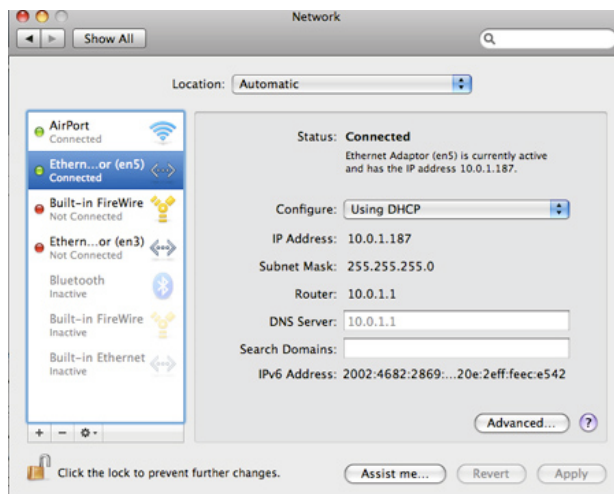
4. Locate the Leopard folder on your desk top and double click to open choose the update driver to install. You will be asked to restart your computer. When computer is back up. Refer to your installation manual that came with your product.

Notice that the left side shows available devices to connect to locate ETHERNET ADAPTER (en whatever number) this is your Quicky. Click to highlight Notice that each device has a dot. Green-Active/Connected Red-Not Connected Yellow-Problem with device-such as a cable not connected.

Notice to the right side of the screen shows that the device that is highlighted Status -Connected Configure drop down menu-Using DHCP and the lower right corner is the APPLY Button. Click to get a valid IP Address



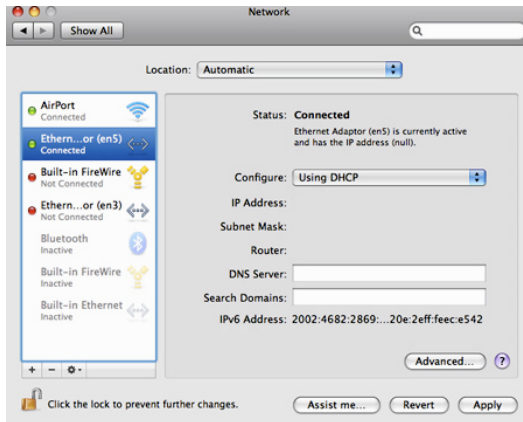
Click Apply



5. Notice that when the Apply Button has been clicked a Valid IP Address, SubNet Mask & Router number will appear. Quit System Preferences and continue with step 8. in the Instruction Manual.

Notice that the left side shows available devices to connect to locate ETHERNET ADAPTER (en whatever numer) this is your Quicky. Click to highlight Notice that each device has a dot. Green-Active/Connected Red-Not Connected Yellow-Problem with devise- such as a cable not connected.

Notice to the right side of the screen shows that the device that is highlighted Status -Connected Configure drop down menu-Using DHCP and the lower right corner is the APPLY Button. Click to get a valid IP Address



Customers that are running OS X 10.5 with newly purchased Quicky Line Products.

Please follow the instructions on this sheet and finish up with step 8 in the manual.

1. Download the Leopard folder from our website choose the correct download. Note: Place the folder on your desktop for easy access.

2. In Applications folder-locate the Utility Folder-inside locate Disk Utility double click to open and click on your hard drive located on the left side of the screen. Click Repair Disk Permissions.

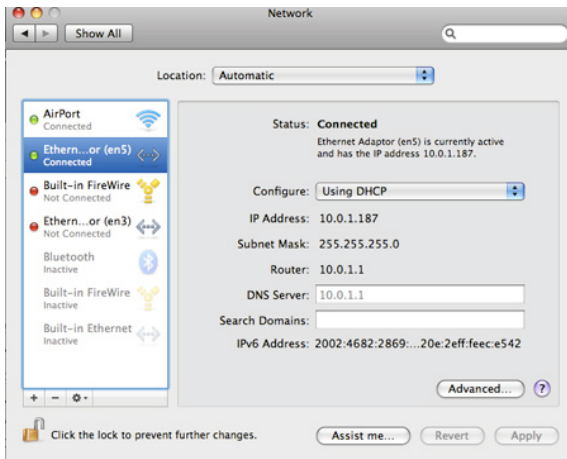


This may take a few minutes depending on how many folders & files you have on your hard drive. When finished it will tell you that permissions were repaired. Close

3. Locate the Leopard folder on your desktop and double click to open, click on the icon you will be asked to restart your computer. When computer is back up, refer to your instruction manual that came with your product.

4. When you are ready to open SYSTEM PREFERENCES under NETWORK you will notice that 10.5 looks much different then 10.3 & 10.4. On the next page there are two screen shots explaining the differences.

5. When you are ready to open SYSTEM PREFERENCES under NETWORK you will notice that 10.5 looks much different then 10.3 & 10.4. Below are two screen shots explaining the differences.



5. Notice that when the APPLY BUTTON has been clicked a valid IP Address, Subnet Mask & Router number will appear. Quit System Preferences. Continue with Step 8 in the Instruction Manual.